

Cereale

Euro / tonă

LIFFE - Grâu - Londra

Contract	7/11/2008	7/14/2008	Schimbare
2008 Nov	178.68	176.80	-1.50 (-1.05%)
2009 Jan	181.82	180.56	-1.00 (-0.69%)
2009 Mar	184.95	183.07	-1.50 (-1.02%)
2009 May	188.40	186.83	-1.25 (-0.83%)
2009 Jul	194.67	189.97	-3.75 (-2.42%)
2009 Nov	186.83	185.58	-1.00 (-0.67%)
2010 Jan	189.66	188.40	-1.00 (-0.66%)
2010 Mar	193.42	192.16	-1.00 (-0.65%)
2010 May			
2010 Nov			

MATIF - Grâu - Franța

Contract	7/11/2008	7/14/2008	Schimbare
2008 Aug	192.25	191.00	-1.25 (-0.65%)
2008 Nov	197.25	196.00	-1.25 (-0.63%)
2009 Jan	198.75	197.75	-1.00 (-0.50%)
2009 Mar	201.00	200.00	-1.00 (-0.50%)
2009 May	202.75	201.75	-1.00 (-0.49%)
2009 Aug	196.75	195.75	-1.00 (-0.51%)
2009 Nov	200.50	199.50	-1.00 (-0.50%)
2010 Jan	196.25	195.25	-1.00 (-0.51%)

MATIF - Porumb - Franța

Contract	7/11/2008	7/14/2008	Schimbare
2008 Aug	208.50	206.00	-2.50 (-1.20%)
2008 Nov	206.50	204.00	-2.50 (-1.21%)
2009 Jan	209.50	207.00	-2.50 (-1.19%)
2009 Mar	210.50	208.00	-2.50 (-1.19%)
2009 Jun	207.50	205.00	-2.50 (-1.20%)
2009 Aug	207.50	205.00	-2.50 (-1.20%)
2009 Nov	207.5	205	-2.50 (-1.20%)

CBOT - Grâu - Chicago

Contract	7/11/2008	7/14/2008	Schimbare
2008 Jul	189.88	187.79	-9.00 (-1.10%)
2008 Sep	192.60	189.65	-12.75 (-1.53%)
2008 Dec	198.22	195.27	-12.75 (-1.49%)
2009 Mar	203.56	200.54	-13.00 (-1.48%)
2009 May	206.92	203.96	-12.75 (-1.43%)
2009 Jul			-14.75 (-1.64%)
2009 Sep			-15.00 (-1.66%)
2009 Dec			-17.00 (-1.85%)
2010 Mar			-17.00 (-1.83%)
2010 Jul			-14.00 (-1.51%)
2010 Dec			

CBOT - Porumb - Chicago

Contract	7/11/2008	7/14/2008	Schimbare
2008 Jul	168.94	163.22	-23.00 (-3.38%)
2008 Sep	171.67	164.90	-27.25 (-3.94%)
2008 Dec	176.20	169.50	-27.00 (-3.81%)
2009 Mar	180.55	173.97	-26.50 (-3.65%)
2009 May	183.41	176.95	-26.00 (-3.52%)
2009 Jul	185.15	178.88	-25.25 (-3.39%)
2009 Sep			-21.50 (-3.02%)
2009 Dec			-19.75 (-2.91%)
2010 Mar			-19.75 (-2.87%)
2010 May			-19.00 (-2.75%)
2010 Jul			-19.00 (-2.73%)
2010 Dec			-11.00 (-1.65%)
2011 Jul			+6.00 (0.91%)
2011 Dec			-6.00 (-0.91%)



Grâu - Ungaria

Contract	7/11/2008	7/14/2008	Schimbare
2008 Aug	0.00	0.00	+1000 (2.50%)
2008 Sep	0.00	0.00	+100 (0.25%)
2008 Dec	0.00	0.00	unch
2009 Mar			unch

Grâu furaj - Ungaria

Contract	7/11/2008	7/14/2008	Schimbare
2008 Aug	152.04	152.04	unch
2008 Sep	153.34	153.34	unch
2008 Dec			unch

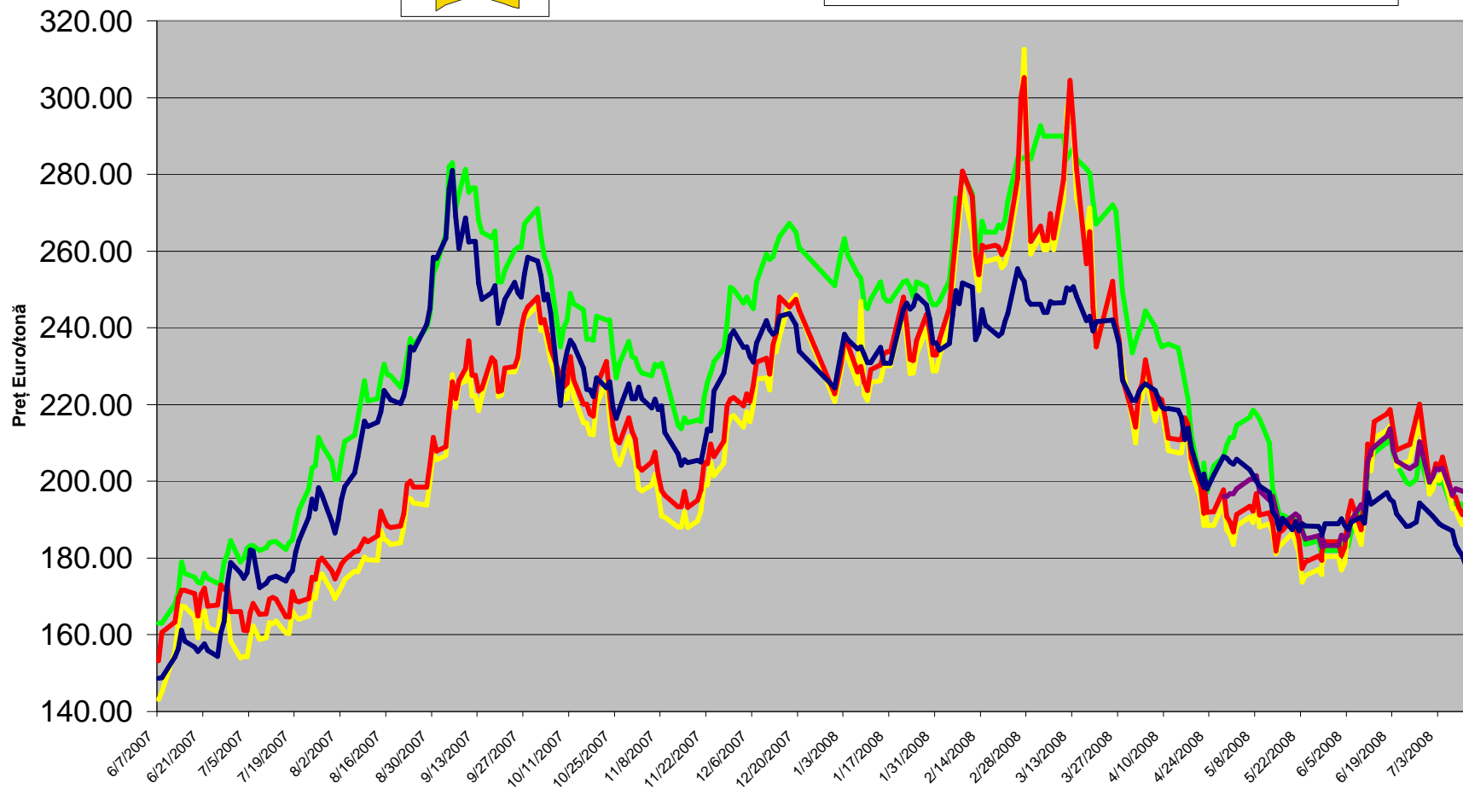
Orz furaj - Ungaria

Contract	7/11/2008	7/14/2008	Schimbare
2008 Aug	142.91	142.91	unch
2008 Sep			unch
			unch

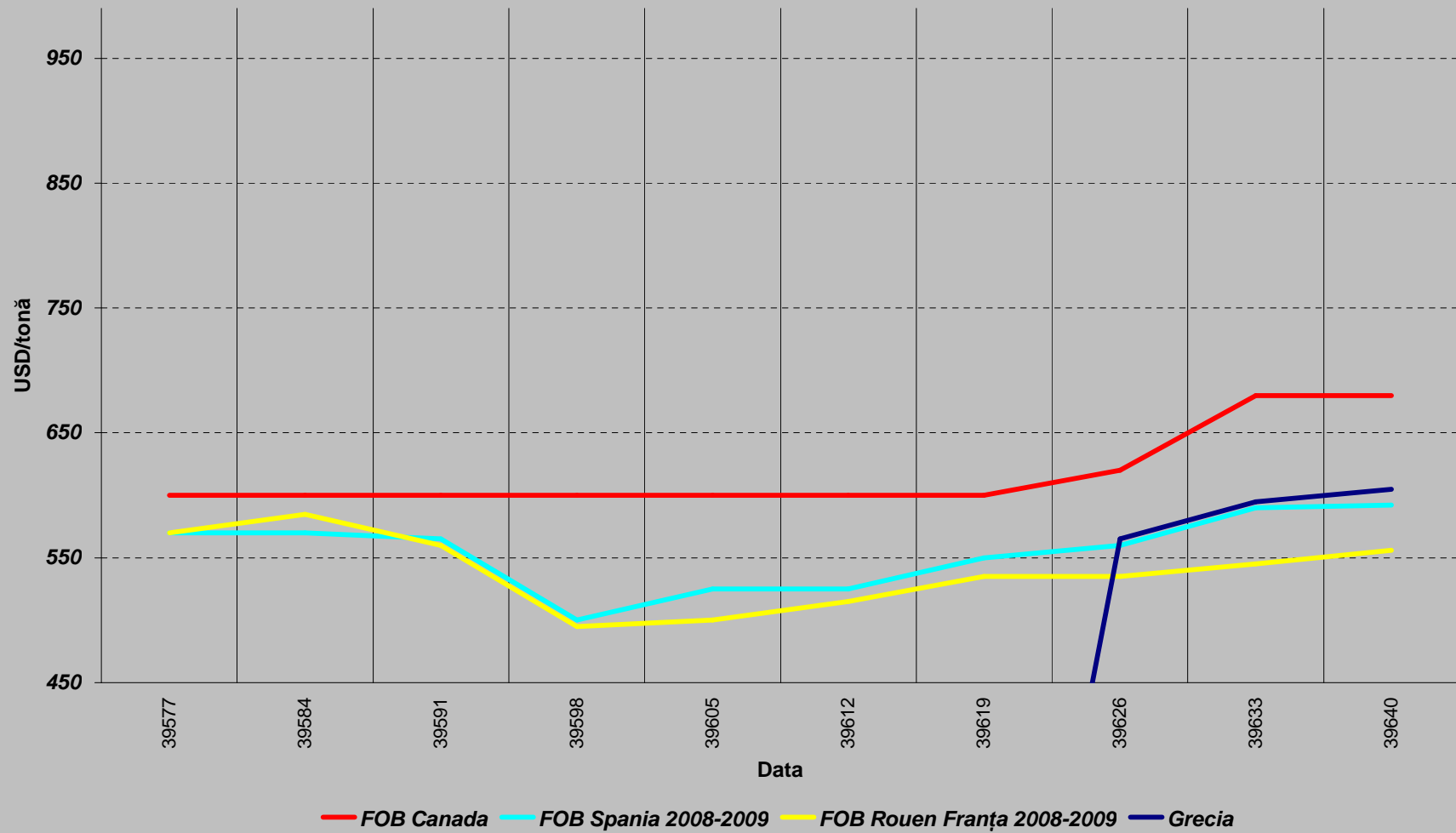
Cotații anul 2007



- MATIF - Grâu - Franța - august 2008
- CBOT - Grâu - Chicago - iulie 2008
- CBOT - Grâu - Chicago - septembrie 2008
- MATIF - Grâu - Franța - noiembrie 2008
- LIFFE - Grâu - Londra - noiembrie 2008



Grâu durum



Grâu morărit

