

# Cereale

Euro / tonă

## LIFFE - Grâu - Londra

Contract	5/8/2008	5/9/2008	Schimbare
2008 May	197.78	198.73	+0.75 (0.48%)
2008 Jul	199.67	200.30	+0.50 (0.32%)
2008 Nov	175.11	176.37	+1.00 (0.72%)
2009 Jan	178.26	179.52	+1.00 (0.71%)
2009 Mar	181.41	182.67	+1.00 (0.69%)
2009 May	183.61	184.87	+1.00 (0.69%)
2009 Jul	187.07	187.70	+0.50 (0.34%)
2009 Nov	176.37	176.37	unch
2010 Jan			
2010 May			

## MATIF - Grâu - Franța

Contract	5/8/2008	5/9/2008	Schimbare
2008 May	217.50	216.25	-1.25 (-0.57%)
2008 Aug	201.50	197.50	-4.00 (-1.99%)
2008 Nov	199.50	196.50	-3.00 (-1.50%)
2009 Jan	200.00	196.50	-3.50 (-1.75%)
2009 Mar	200.00	197.00	-3.00 (-1.50%)
2009 May	201.00	198.00	-3.00 (-1.49%)
2009 Aug	186.50	183.50	-3.00 (-1.61%)
2009 Nov	198.00	195.00	-3.00 (-1.52%)

## MATIF - Porumb - Franța

Contract	5/8/2008	5/9/2008	Schimbare
2008 Jun	193.50	194.00	+0.50 (0.26%)
2008 Aug	195.00	196.00	+1.00 (0.51%)
2008 Nov	194.75	195.00	+0.25 (0.13%)
2009 Jan	197.75	198.25	+0.50 (0.25%)
2009 Mar	199.75	200.25	+0.50 (0.25%)
2009 Jun	196.75	197.25	+0.50 (0.25%)
2009 Aug	196.5	197	+0.50 (0.25%)

## CBOT - Grâu - Chicago

Contract	5/8/2008	5/9/2008	Schimbare
2008 May	192.28	188.12	-17.50 (-2.16%)
2008 Jul	195.37	191.21	-17.50 (-2.13%)
2008 Sep	198.64	194.54	-17.25 (-2.06%)
2008 Dec	203.51	199.53	-16.75 (-1.96%)
2009 Mar	207.73	203.93	-16.00 (-1.83%)
2009 May			-21.50 (-2.42%)
2009 Jul			-11.00 (-1.27%)
2009 Sep			-11.50 (-1.32%)
2009 Dec			-11.50 (-1.30%)
2010 Mar			-10.00 (-1.13%)
2010 Jul			
2010 Dec			

## CBOT - Porumb - Chicago

Contract	5/8/2008	5/9/2008	Schimbare
2008 May	157.59	157.53	-0.25 (-0.04%)
2008 Jul	160.52	160.26	-1.00 (-0.16%)
2008 Sep	162.94	163.26	+1.25 (0.20%)
2008 Dec	164.59	165.55	+3.75 (0.58%)
2009 Mar	167.27	168.35	+4.25 (0.65%)
2009 May	169.31	170.39	+4.25 (0.64%)
2009 Jul			+4.75 (0.71%)
2009 Sep			+4.75 (0.76%)
2009 Dec			+8.00 (1.35%)
2010 Mar			+8.00 (1.33%)
2010 May			+8.00 (1.32%)
2010 Jul			+8.00 (1.32%)
2010 Dec			+7.00 (1.16%)



## Grâu - Ungaria

Contract	5/8/2008	5/9/2008	Schimbare
2008 Aug	0.00	0.00	unch
2008 Sep	0.00	0.00	unch
2008 Dec	0.00	0.00	unch
2009 May			unch

## Grâu furaj - Ungaria

Contract	5/8/2008	5/9/2008	Schimbare
2008 Aug	165.30	166.88	+400 (0.96%)
2008 Sep	168.07	168.07	unch
2008 Dec			unch

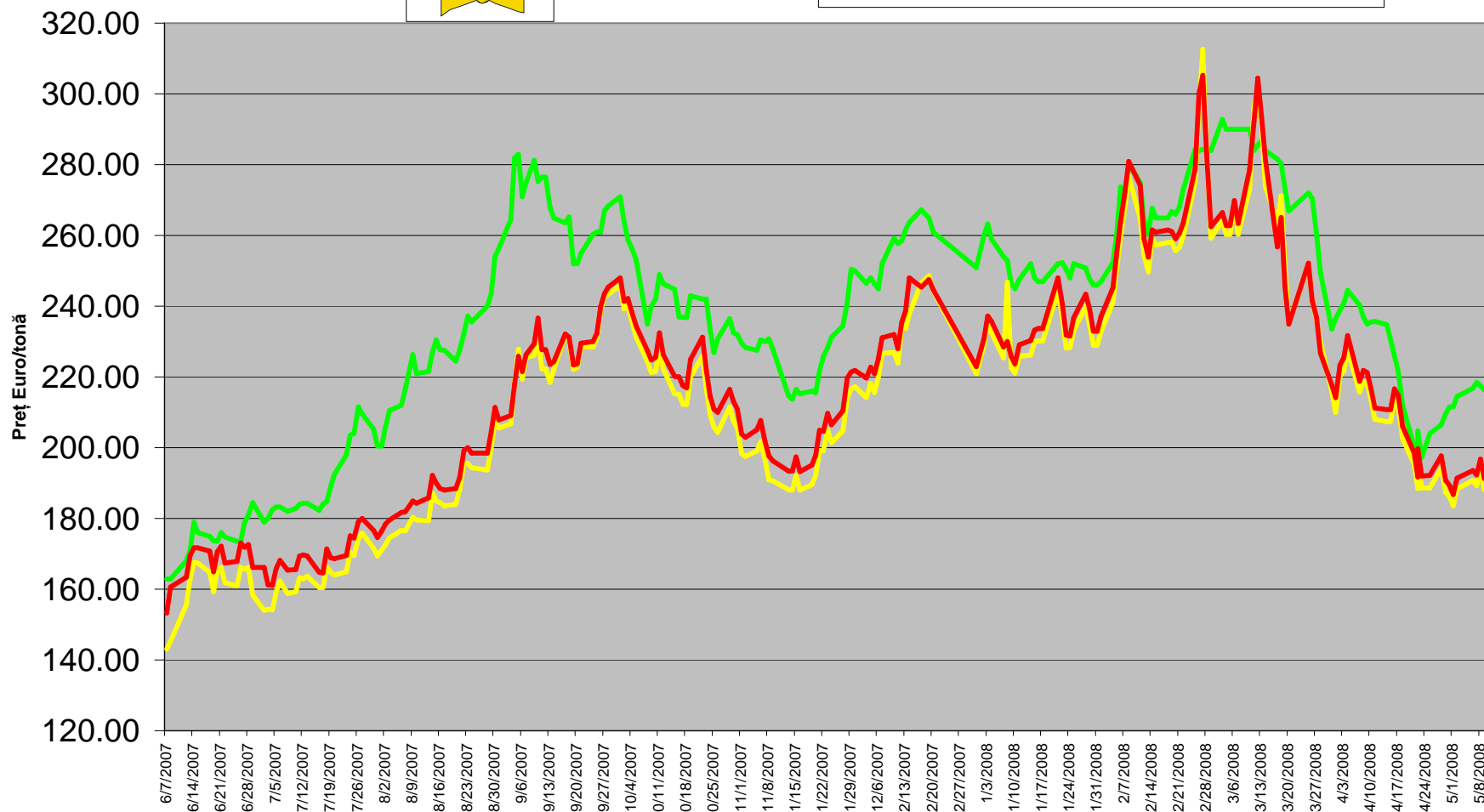
## Orz furaj - Ungaria

Contract	5/8/2008	5/9/2008	Schimbare
2008 Aug	151.86	151.86	unch

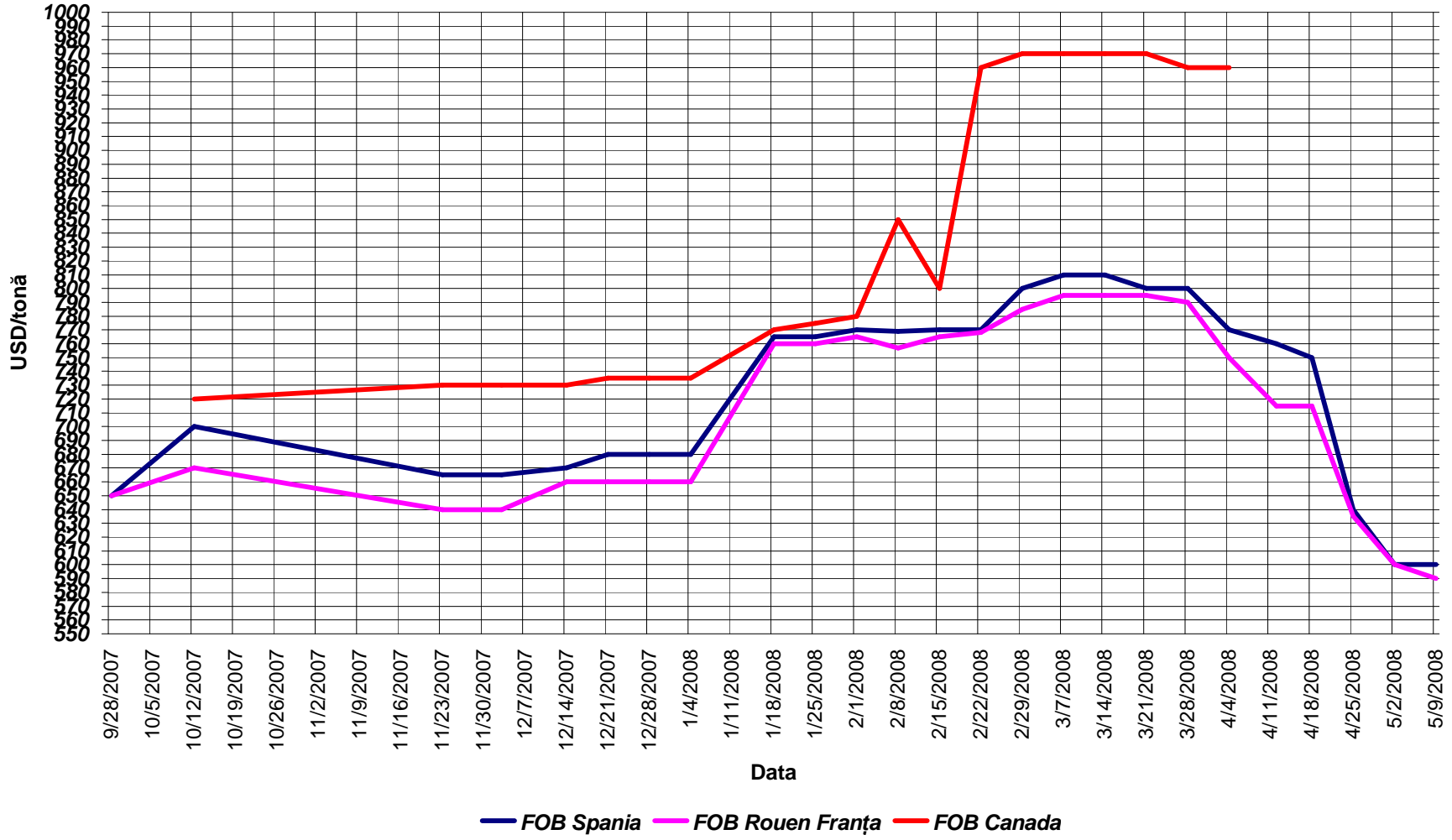
# Cotații anul 2007



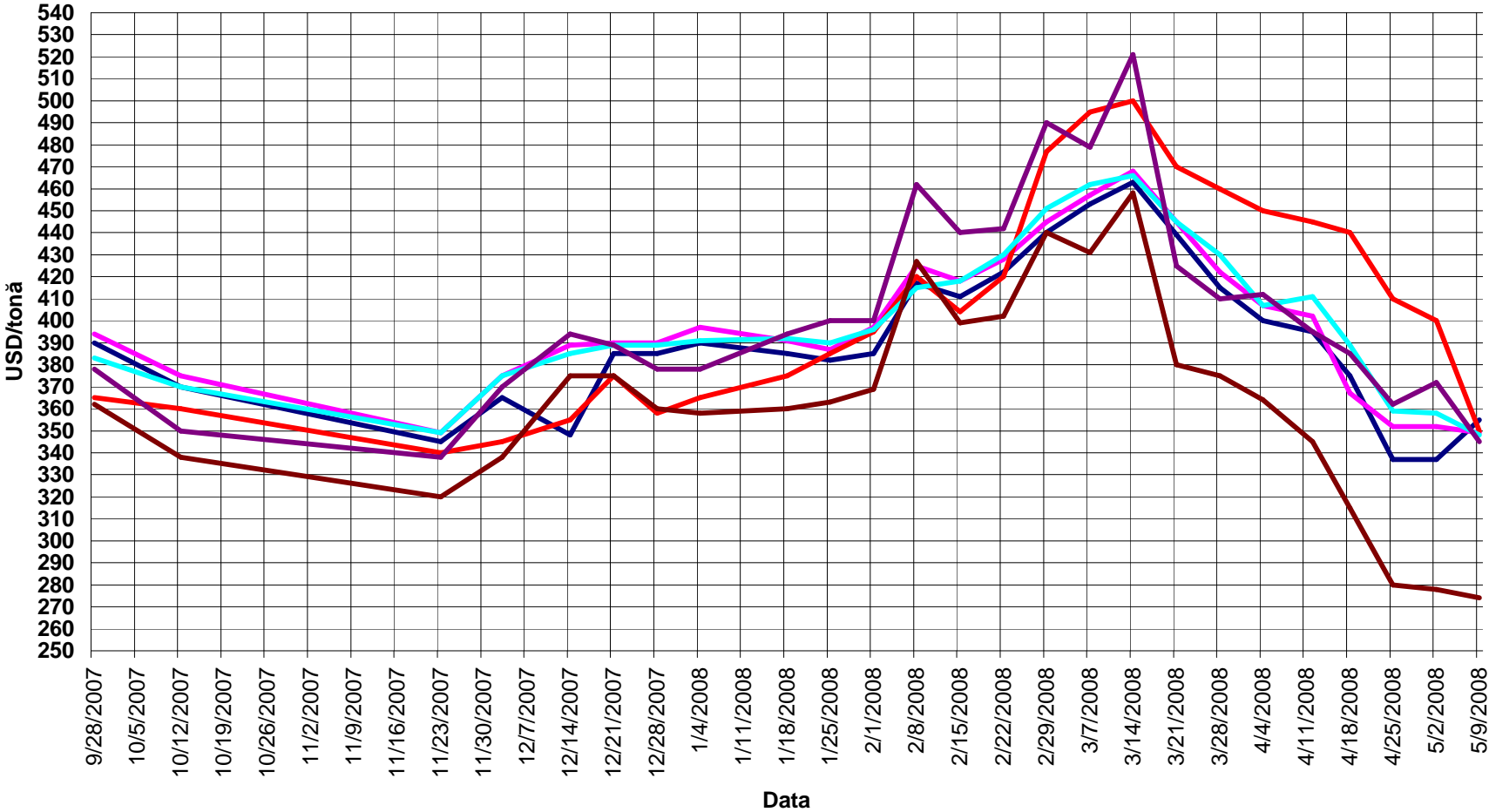
- MATIF - Grâu - Franța
- CBOT - Grâu - Chicago
- CBOT - Grâu - Chicago - iulie 2008



# Grâu durum



# Grâu morărit



— FOB Rouen Franța — FOB Pallice Franța — FOB Marea Neagră — FOB Germania — FOB Golf SUA -hard — FOB Golf SUA -soft