

Cereale

Euro / tonă

LIFFE - Grâu - Londra

Contract	12/10/2008	12/11/2008	Schimbare
2009 Jan	103.51	103.45	-0.05 (-0.05%)
2009 Mar	106.89	107.11	+0.20 (0.21%)
2009 May	110.27	110.22	-0.05 (-0.05%)
2009 Jul	112.75	112.75	unch
2009 Nov	122.11	121.77	-0.30 (-0.28%)
2010 Jan	124.93	124.59	-0.30 (-0.27%)
2010 Mar	127.75	127.41	-0.30 (-0.26%)
2010 May	130.23	129.89	-0.30 (-0.26%)
2010 Jul			
2010 Nov			

MATIF - Grâu - Franța

Contract	12/10/2008	12/11/2008	Schimbare
2009 Jan	128.75	127.75	-1.00 (-0.78%)
2009 Mar	129.00	127.75	-1.25 (-0.97%)
2009 May	129.00	128.00	-1.00 (-0.78%)
2009 Aug	138.00	137.25	-0.75 (-0.54%)
2009 Nov	138.75	137.25	-1.50 (-1.08%)
2010 Jan	140.00	138.50	-1.50 (-1.07%)
2010 Mar	140.25	139.25	-1.00 (-0.71%)
2010 May	140.25	139.25	-1.00 (-0.71%)

MATIF - Porumb - Franța

Contract	12/10/2008	12/11/2008	Schimbare
2009 Jan	113.00	111.50	-1.50 (-1.33%)
2009 Mar	115.00	115.00	unch
2009 Jun	118.00	118.00	unch
2009 Aug	120.00	118.00	-2.00 (-1.67%)
2009 Nov	128.00	127.00	-1.00 (-0.78%)
2010 Jan	126.00	125.00	-1.00 (-0.79%)
2010 Mar	126	125	-1.00 (-0.79%)

CBOT - Grâu - Chicago

Contract	12/10/2008	12/11/2008	Schimbare
2008 Dec	137.48	136.58	-3.25 (-0.66%)
2009 Mar	141.65	141.09	-2.00 (-0.39%)
2009 May	145.26	144.78	-1.75 (-0.33%)
2009 Jul	148.74	148.32	-1.50 (-0.28%)
2009 Sep	154.99	154.44	-2.00 (-0.36%)
2009 Dec			-3.25 (-0.56%)
2010 Mar			-3.25 (-0.55%)
2010 Jul			-0.50 (-0.09%)
2010 Dec			+1.00 (0.16%)
2011 Jul			-0.50 (-0.08%)

CBOT - Porumb - Chicago

Contract	12/10/2008	12/11/2008	Schimbare
2008 Dec	97.35	100.70	+11.25 (3.44%)
2009 Mar	101.89	104.72	+9.50 (2.78%)
2009 May	105.09	108.00	+9.75 (2.76%)
2009 Jul	108.14	111.05	+9.75 (2.69%)
2009 Sep	111.20	114.10	+9.75 (2.61%)
2009 Dec	115.37	118.12	+9.25 (2.39%)
2010 Mar			+9.30 (2.33%)
2010 May			+9.25 (2.27%)
2010 Jul			+9.25 (2.24%)
2010 Sep			+9.00 (2.20%)
2010 Dec			+8.75 (2.16%)
2011 Jul			+4.75 (1.11%)
2011 Dec			+7.25 (1.72%)



Grâu - Ungaria

Contract	12/10/2008	12/11/2008	Schimbare
2009 Mar	117.22	119.12	+500 (1.61%)
2009 May	121.01	121.01	unch
2009 Aug	120.25	119.87	-100 (-0.31%)
2009 Sep			

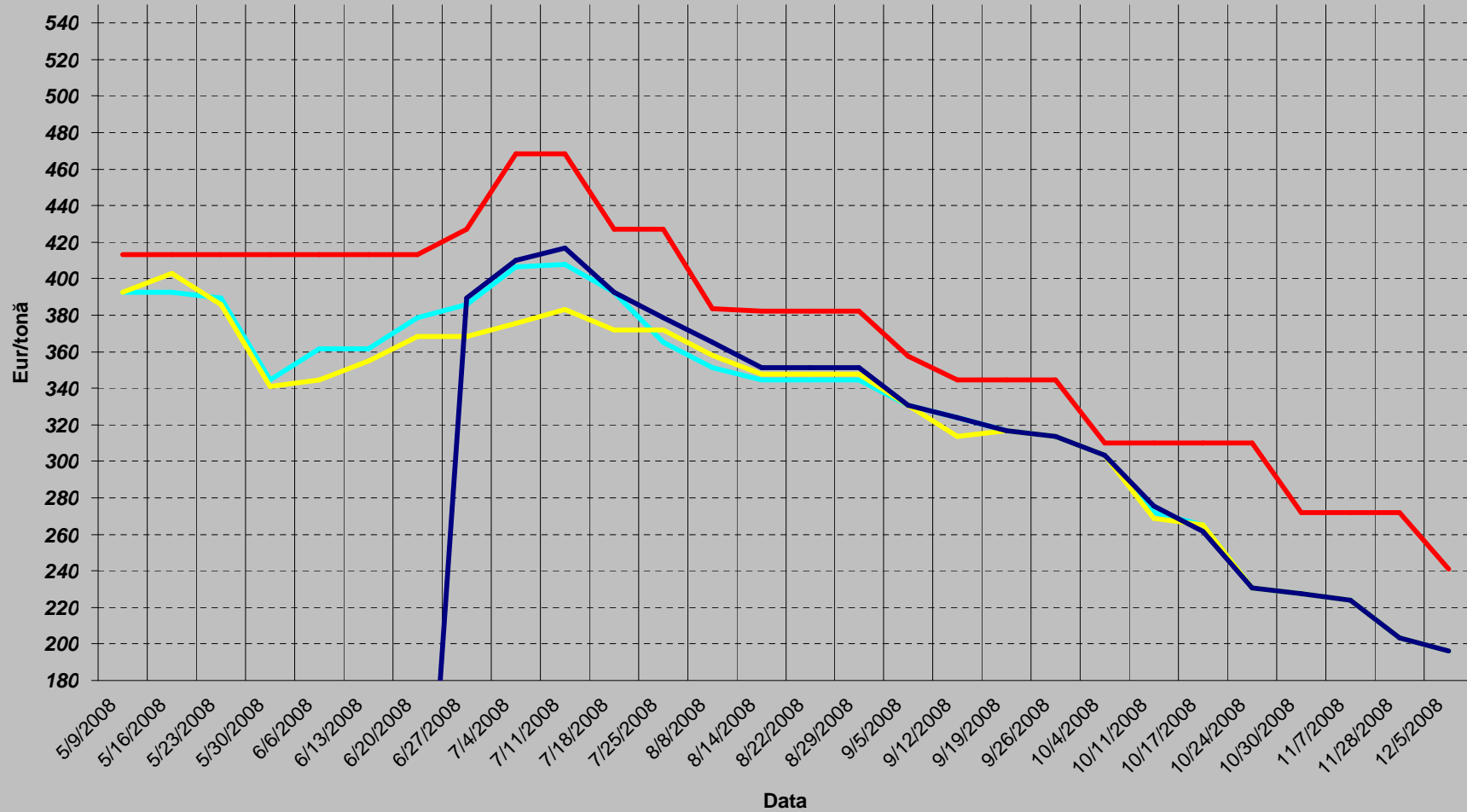
Grâu furaj - Ungaria

Contract	12/10/2008	12/11/2008	Schimbare
2009 Mar	92.27	92.27	unch
2009 Aug	94.54	94.54	unch

Orz furaj - Ungaria

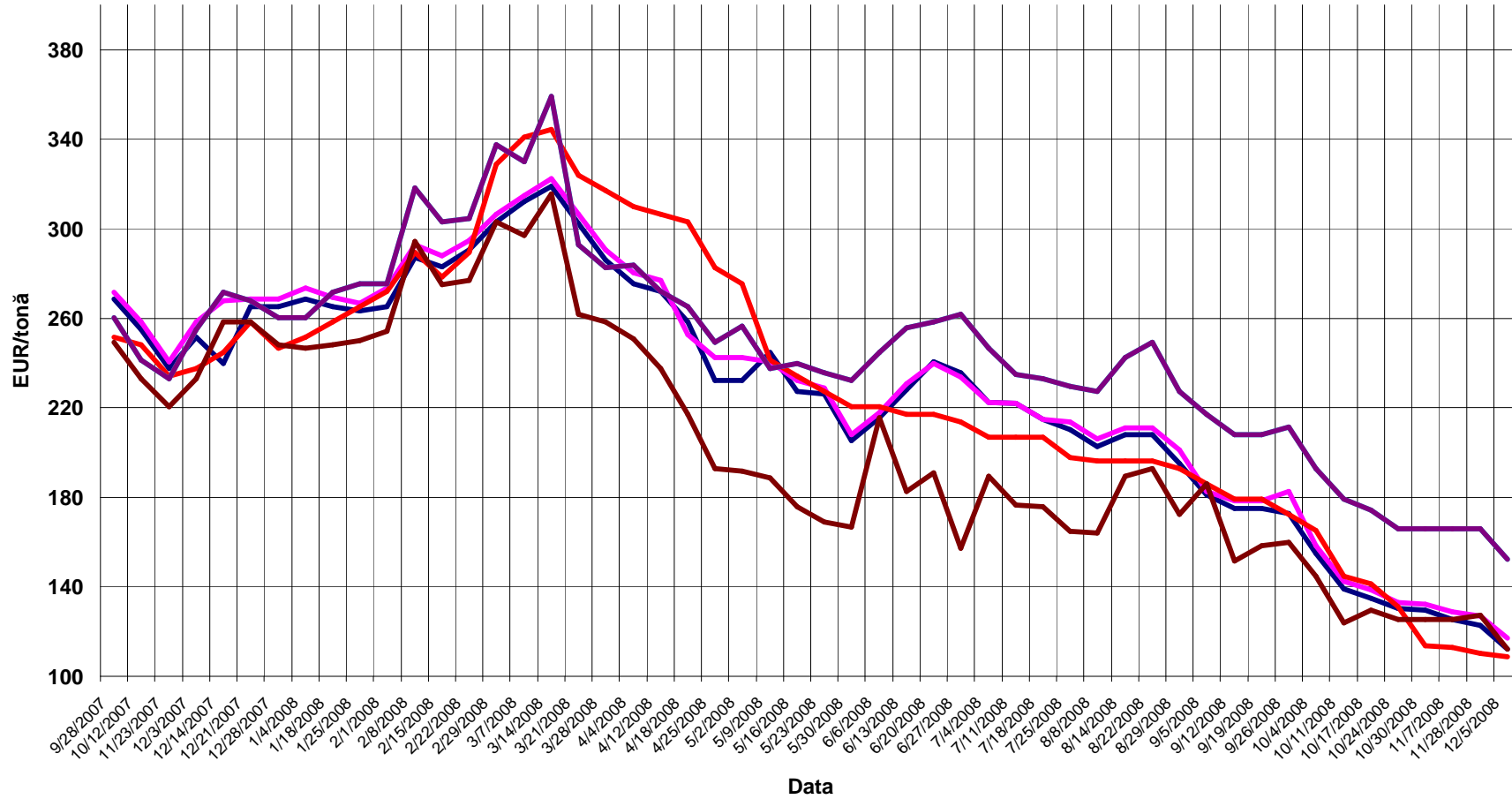
Contract	12/10/2008	12/11/2008	Schimbare
2009 Mar	92.65	92.65	unch
2009 May			unch

Grâu durum



— FOB Canada — FOB Spainia 2008-2009 — FOB Rouen Franța 2008-2009 — Grecia

Grâu morărit



— FOB Rouen Franța — FOB Pallice Franța — FOB Marea Neagră — FOB Germania — FOB Golf SUA -hard — FOB Golf SUA -soft